

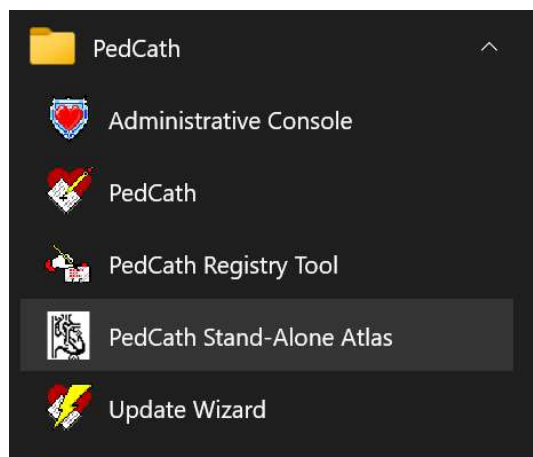
PedCath Stand-Alone Diagram Atlas

PedCath will allow you to print, export and temporarily edit any of the 1500+ CHD atlas diagrams in a stand-alone module not linked to a particular patient's record or cath report. The original Mullins & Mayer atlas diagrams are accessible as well as variations and supplemental diagrams. Users who log in to PedCath with the user account **ATLAS** (p: ATLAS), or click the dedicated shortcut will be taken directly to the atlas, without seeing any patient information from the cath reports. This will allow the possibility to make custom congenital diagrams available for other uses and departments. Any edited diagrams will be temporarily stored on the local workstation and will be automatically removed after 30 days or all will be purged on exit if that option is set.

Please contact Scientific Software for assistance setting up this feature.

Using the Diagram Atlas

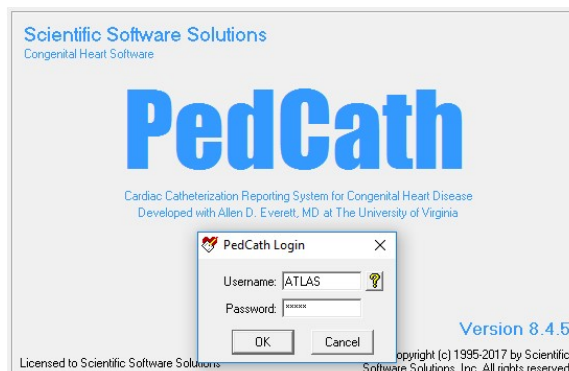
In PedCath version 8.6.5 and above you can launch the Diagram Atlas by clicking the "PedCath Stand-Alone Atlas" shortcut in the Start-menu PedCath program files group:



To run the Diagram Atlas in prior versions open PedCath and log in with the following credentials:

U: ATLAS

P: ATLAS



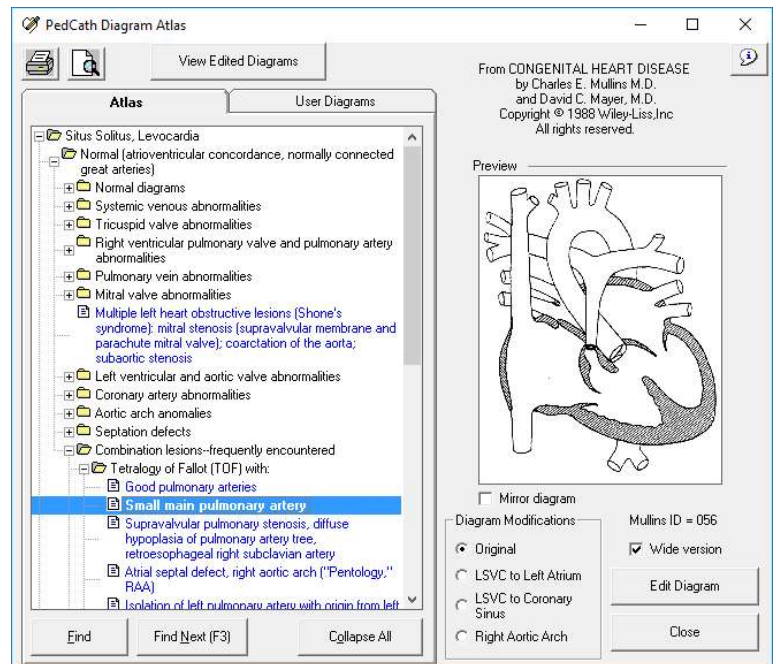
Usage instructions will be displayed when you log in.

Two tabs will be shown listing the available atlas and supplemental diagrams. Browse to your desired diagram, or use the Find button to search by name.

You can choose variations to the selected diagram by choosing a modification underneath the diagram preview. For instance you can add an LSVC or use a Right Aortic Arch for most of the original Atlas diagrams. A wider version is also available for most diagrams with additional room for the pulmonary arteries, and you can mirror any diagram for dextrocardia patients.



To print an unaltered Atlas or supplemental diagram, click the print or preview button with the desired diagram selected. You will be given the choice to override the label that appears on the diagram printout.



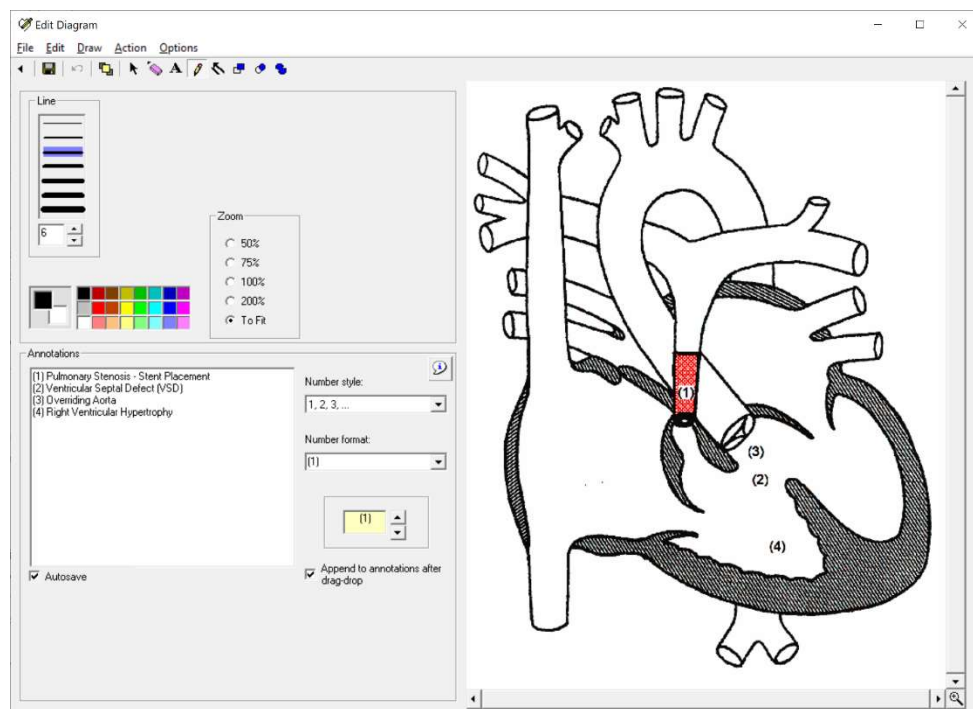
Editing a Diagram

If you would like to further edit a diagram to make anatomical changes or add annotations, highlight a diagram in the atlas and click the Edit Diagram button (or double-click the diagram name).

You will be editing a copy of the diagram that will not affect the original atlas.

The PedCath Diagram Editor will be displayed with the selected diagram. You will be able edit the diagram with tools similar to Windows paintbrush. Select a tool at the top of the screen and choose options on the left side (such as draw color and line width). Any annotations written will be included in the printouts. Please refer to the PedCath user's guide for more information about the drawing tools.

When you are finished, click the save icon and close the window.



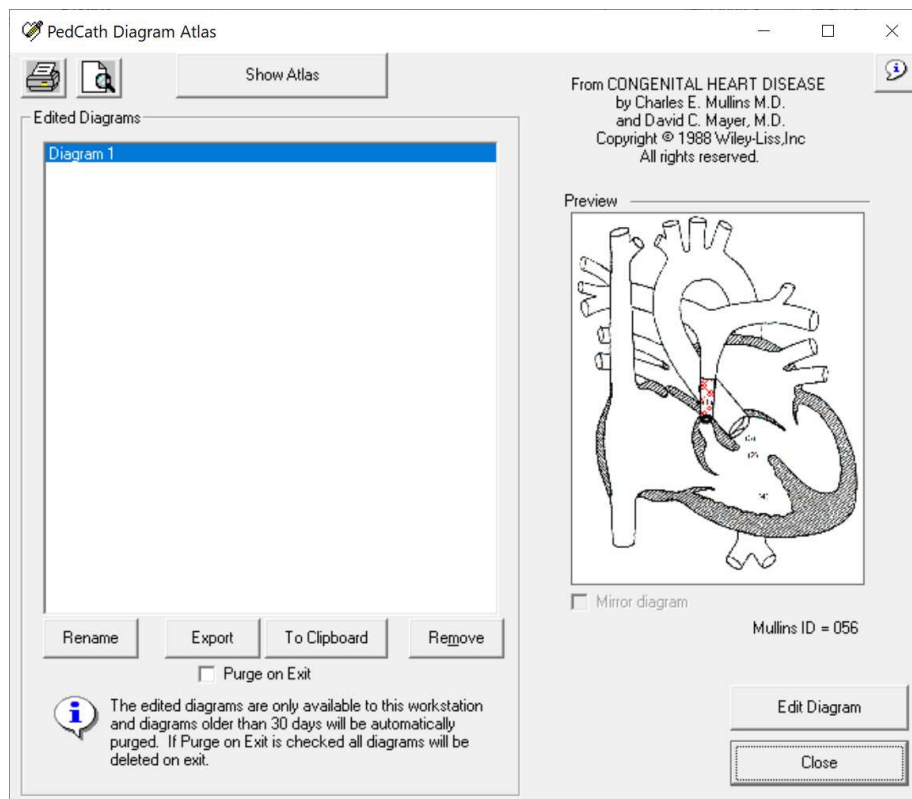
Edited Diagrams List

After making modifications to a diagram, your locally saved Edited Diagrams list will be displayed.

For any of the edited diagrams, you will be able to print, copy to the Windows clipboard (to paste into another application), or export to an image file. If any annotations were added to the diagram you will be given a choice as to whether they should be included with the export.

You will also be able to rename a diagram to better describe the diagram contents. The diagram name will be shown as a label for the printout, which can also be set at the time a diagram is printed.

Diagrams that are 30 days old will be automatically purged. When Purge on Exit is checked all diagrams will be deleted when the atlas is closed.



To go back to the atlas to work on another diagram, click the Show Atlas button.

Launching the Stand-Alone Atlas with LDAP Enabled

In versions prior to 8.6.3 it is not possible to load the Stand-Alone atlas while using LDAP authentication since the login prompt is bypassed. A workaround is to configure a separate database folder with a blank database (initial PedCath database with no patient data) and disable LDAP authentication on that database. Workstations that you would like to run the Stand-Alone Atlas would need to be pointed to this data share.

In versions 8.6.3 and 8.6.4 you can set the workstations that you would like to use the Stand-Alone Atlas on to use PedCath authentication instead of LDAP.

To enable local logins on a workstation:

- Tools > Options
- Click the More button on the bottom of the General tab
- Check "Login with PedCath credentials on this workstation (rather than LDAP)" and click Ok.

In versions 8.6.5 and later you can launch the atlas by clicking the program files shortcut, whether LDAP is enabled or not.